

KOHLER® RH SERIES™

ENGINE TYPE		Four-cycle, single-cylinder, slant-cylinder, OHV, air-cooled, gasoline, horizontal shaft, aluminum head and crankcase.	
MODEL		RH255	RH265
GROSS POWER @ 3600 RPM*	Maximum hp (kW)	5.5 (4.2)	6.5 (4.8)
DISPLACEMENT	cu in (cc)	12 (196)	
BORE	in (mm)	2.7 (68)	
STROKE	in (mm)	2.1 (54)	
PEAK TORQUE	@ rpm ft lb (Nm)	10.5 (14.2) @ 3000 rpm	10.7 (14.5) @ 3000 rpm
COMPRESSION RATIO		8.5:1	
DRY WEIGHT	lb (kg)	28.8 (13)	
OIL CAPACITY	U.S. qt (L)	0.6 (.6)	
FUEL CAPACITY	U.S. qt (L)	2 (2.1)	
LUBRICATION		Splash	
DIMENSIONS ¹ L x W x H	in (mm)	9.8 x 14.0 x 13.0 (249 x 356 x 330)	
CRANKSHAFT HEIGHT	in (mm)	4.2 (106)	

*Horsepower ratings exceed Society of Automotive Engineers Small Engine Test Code J1940. Actual engine horsepower is lower and affected by, but not limited to, accessories (air cleaner, exhaust, charging, cooling, fuel pump, etc.), application, engine speed and ambient operating conditions (temperature, humidity and altitude). For more information, contact Kohler Co. Engine Engineering. Kohler reserves the right to change product specifications, designs and equipment without notice and without incurring obligation.

¹Engine measurements based on a base engine without electric start. Length is recoil starter to PTO face.

STANDARD FEATURES

OHV slant-cylinder	Ductile iron fillet-rolled crankshaft
Electronic ignition	High-inertia flywheel
Quiet muffler with heat shield	
CARB Tier-3-compliant	Silenced air intake
All-in-one throttle, choke and shutoff control lever	Easy-pull recoil starter
Automatic compression release	EMC/RFI-compliant
Mechanical governor	Accu-Fill® fuel tank
Sound-deadening alloy crankcase	2-year limited consumer warranty
Carburetor bowl drain	

POPULAR FACTORY OPTIONS

12-volt starter	(keyed, tapered, threaded)
Exhaust deflector	Low-profile air cleaner and muffler (generator)
Spark arrestor	Paper element air cleaner
3- and 10-amp charging systems	Dual oil fill
Crankshaft/PTO variations	Dual-element air cleaner

KOHLER®
IN POWER. SINCE 1920.

For more information, contact your KOHLER source of supply. Kohler Co. reserves the right to make modifications without prior notice.

KOHLERPOWER.IT

Printed in Italy ED0035585400 Rev.01 06/18 Eng KOHLER CO.

KOHLER® RH SERIES™

5.5–6.5 HP Engines



KOHLER®
IN POWER. SINCE 1920.

Go ahead. ASK FOR MORE FROM YOUR ENGINE.

KOHLER® RH SERIES™ 5.5–6.5 HP Engines



RH265

Get pro-grade features on an easy-to-handle consumer engine. The KOHLER® RH Series™ has overhead valve design for better fuel efficiency and user-friendly features like Accu-Fill® and easy-pull technology for the homeowner. It's CARB Tier 3-compliant for emissions and backed by a two-year limited warranty. And built to last, so consumers get more hours out of their equipment.

EASY TO START

- Effortless starts with large recoil starter
- Easy-pull ergonomic handle
- Quiet operation thanks to the oversized muffler with heat shield

EASY TO USE

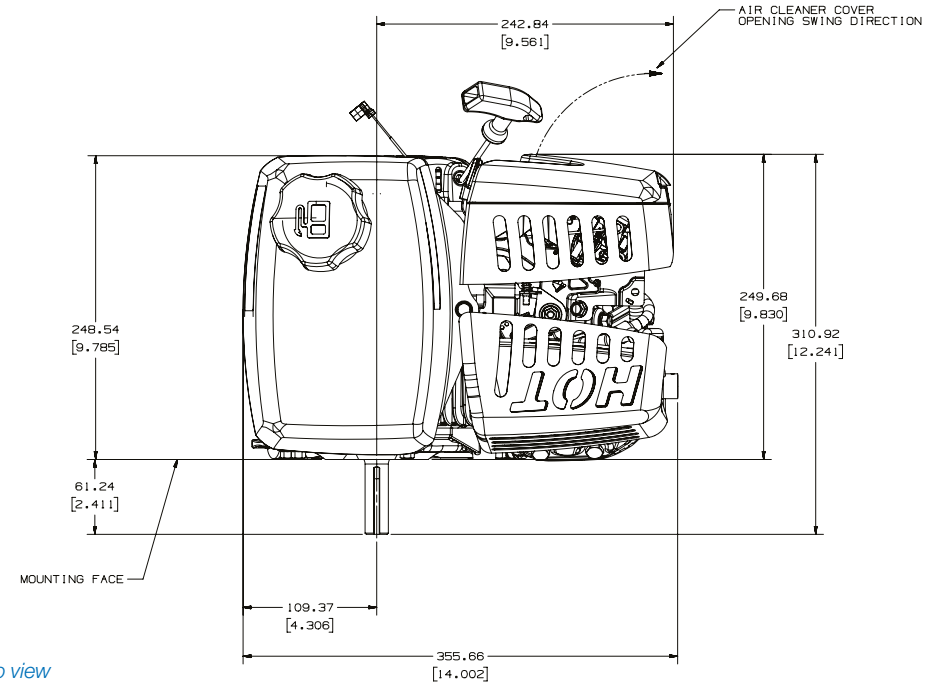
- Easy pours and less spilling with Accu-Fill fuel tank's 45% larger angled fuel neck
- Simple starts and stops with all-in-one throttle/choke/shutoff control lever
- Lightweight design makes for easy maneuverability

TOP PERFORMANCE

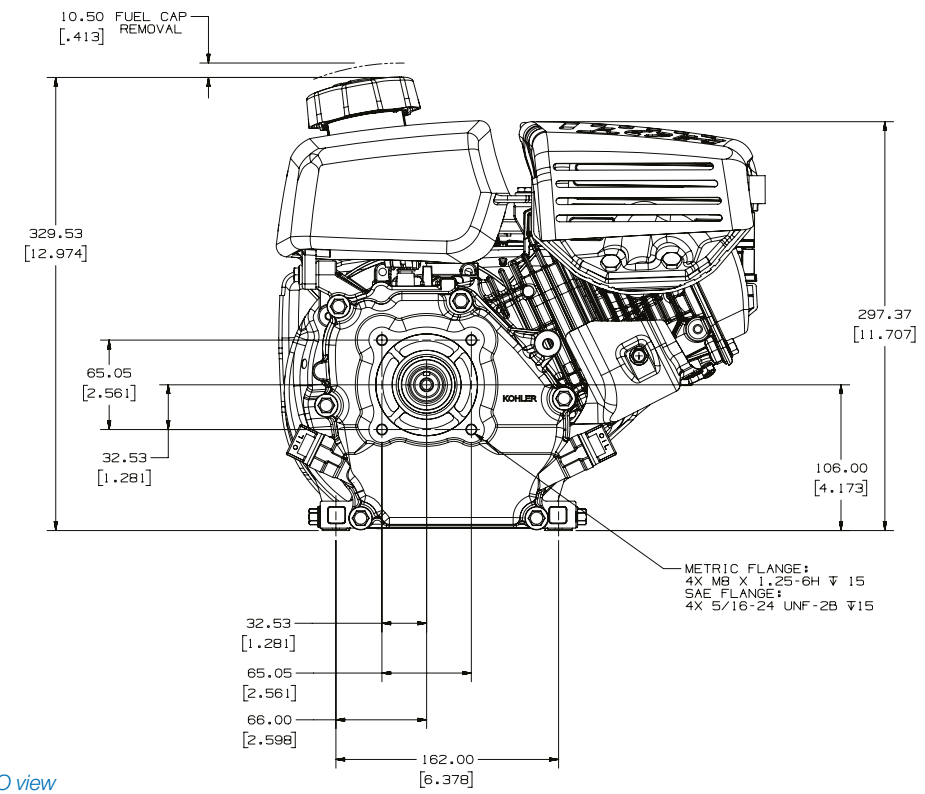
- Small, but powerful – a compact design with high horsepower and torque
- Cool-running OHV design for fuel efficiency with clean emissions

WE'VE GOT YOUR BACK

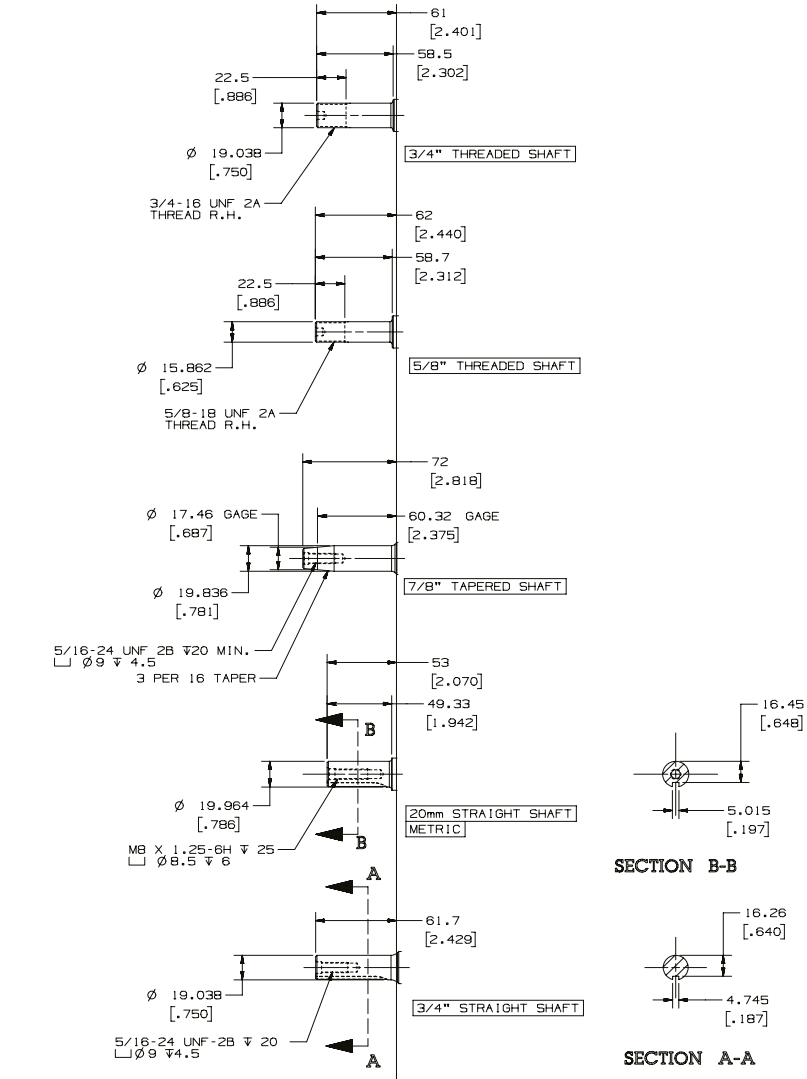
- We stand behind our dealers. And they stand behind our warranty
- Need a replacement part? It's in stock now, not later
- KOHLER genuine parts are built for the long haul to give you peace of mind



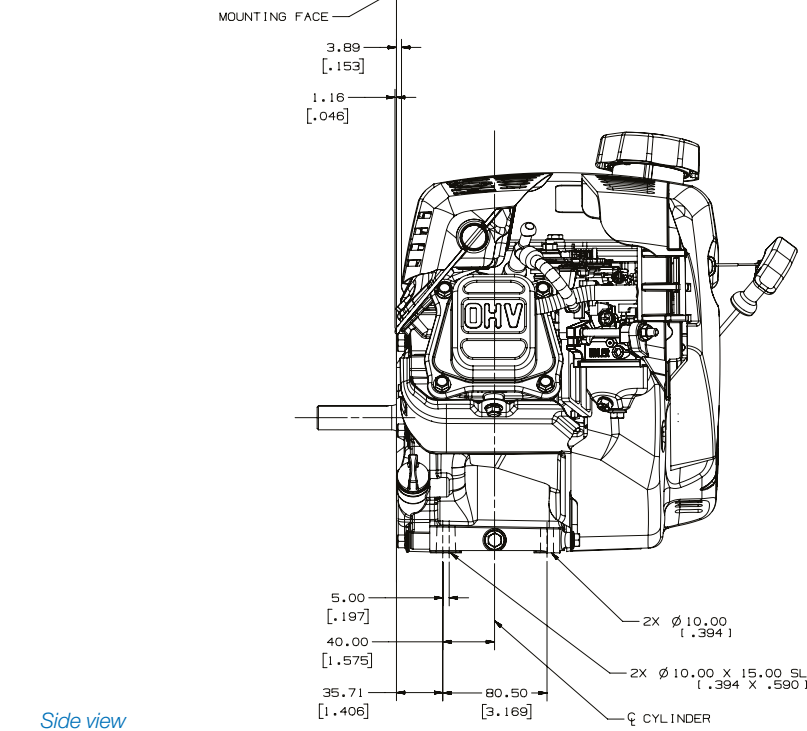
Top view



PTO view



Shaft variations



Side view

